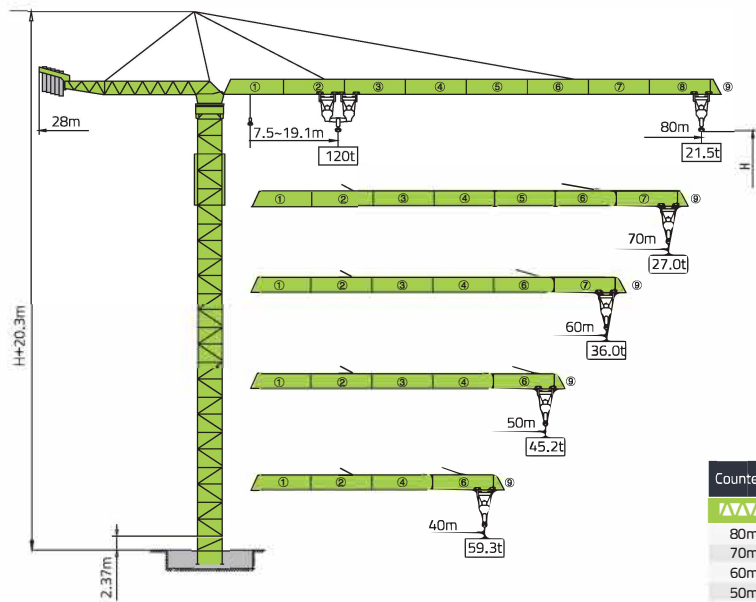


D2500-120

ООО "Лекс-Строй"

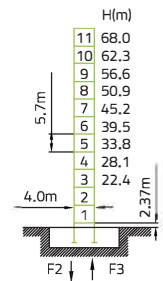
Юридический адрес: 350072, г. Краснодар, ул. Ростовское шоссе 14/2, оф. 311
e-mail: info@zoomlionpro.ru, tel: +7 (861) 205-67-91, +7 (928) 221-97-91



Counter-jib ballast		17800-15000-10000kg			
		PHZ17800	PHZ15000	PHZ10000	
80m	28m	89000	5	0	0
70m	28m	81200	4	1	1
60m	28m	68400	3	1	0
50m	28m	60600	2	1	1
40m	28m	45600	2	0	1

Final product specification shall be in accordance with purchase order or sales contract only

塔身 Masts / 反力 Reactions

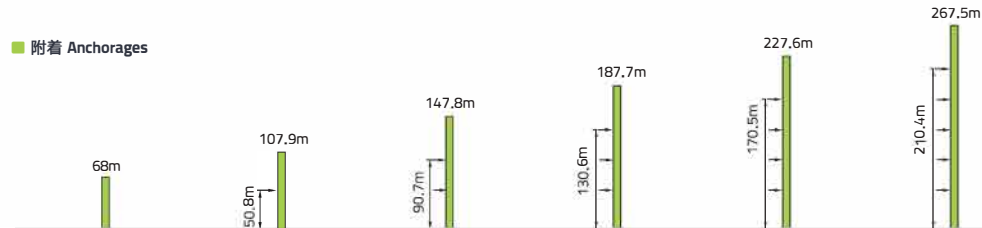


支腿固定式 Outrigger

Outrigger	
F2	● (i)
F3	■ (i)
	⊙ (i)

- 工作状态反力
Reactions in service
- 非工作状态反力
Reactions out of service
- ⊙ 独立高度、最大起重臂的自重 (不含平衡重、吊重)
Weight with max free-standing height, max jib
(without counter-weight and load)

附着 Anchorages



起重特性 Load Diagram

R(m)	Max.Capacity m/t	Capacity (m/t)															
		15	20	25	30	35	40	45	50	55	60	65	70	75	80	85	
80.0 (R=82.9)	б	6.0-64.0/30															
	⌘	6.0-35.8/60															
	⌘⌘	6.0-19.1/120															
70.0 (R=72.9)	б	6.0-66.3/30															
	⌘	6.0-37.0/60															
	⌘⌘	6.0-19.7/120															
60.0 (R=62.9)	б	6.0-60.0/30															
	⌘	6.0-39.4/60															
	⌘⌘	6.0-20.9/120															
50.0 (R=52.9)	б	6.0-50.0/30															
	⌘	6.0-39.4/60															
	⌘⌘	6.0-20.9/120															
40.0 (R=42.9)	б	6.0-40.0/30															
	⌘	6.0-39.4/60															
	⌘⌘	6.0-20.9/120															

传动机构 Mechanisms

配置 Configuration	Unit	II				III				IV				kW	Icon
		II	III	IV	V	II	III	IV	V	II	III	IV	V		
起升 Hoisting H132FL150-1230D	m/min	20	40	68	100	10	20	34	50	5	10	17	25	132	1230m (5layers)
	t	30	15	7.5	2	60	30	15	4	120	60	30	8		
回转 Slewing HP185F1.350 FP185F2.350	r/min	0-0.55												18.5	① 超出咨询我们 Consult us if overtop
变幅 Trolleying BPI185	m/min	0-10				0-20				0-40					
	t	0-120				0-60				0-30					
380V(±10%)50Hz	224.5 kW(excluding climbing and auxiliary mechanisms)														